

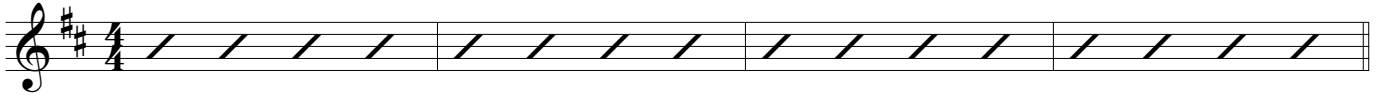
Lead Sheet

Almighty God, The King of Glory

Moderato (♩ = 96)

Composed by
Rick Barclay

D *Intro*



A *1st Verse*

D **A** **Bm** **A**



Al-migh - ty God is the God who cre - at - ed Hea - ven and earth. The one True God Who gov - erns all — things.



D **A** **Bm** **A**

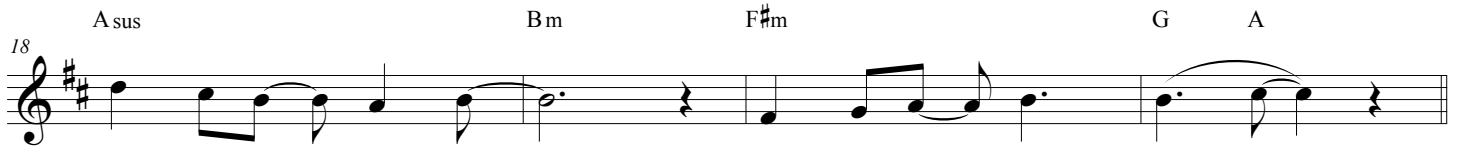
He sits u - pon The Great Throne and jud - ges all — peo - ples and rules all na - tions with His i - ron rod.

B **Gmaj7** *Pre Chorus*

Bm **F#m** **Bm**



— God in - car - nate rules as king, when He ap - pears in the East. in



A sus **Bm** **F#m** **G** **A**

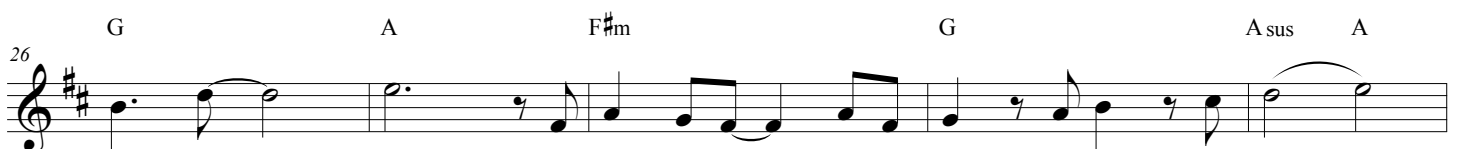
maj - es - ty — and wrath — His King - dom — has come! —

C *Chorus*

D **G** **D/A** **A** **D**

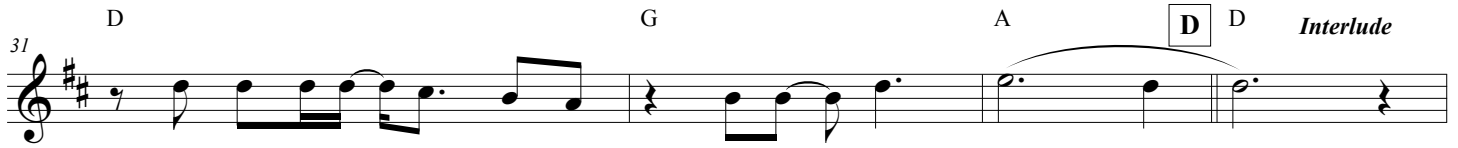


Al - migh - ty God is the Lamb, man's on - ly Re - deem - er — The on - ly way man is saved



G **A** **F#m** **G** **A sus** **A**

is through Him Al - migh - ty God is The Truth, The Way, The Life! —



D **G** **A** **D** **D** *Interlude*

He is The King of Glor - y for - ev - er, A - - men!

D

35

Al - migh - ty God is the Lamb! Al - migh - ty God is the Lamb! Al - migh - ty God is the Lamb!

E D *2nd Verse* A Bm A

He un - rolls the scroll and op - ens the se - ven seals. He is the light - ning that flash - es from the East

D A Bm A

42

and shines un - to the West He is the True Light that all na - tions march un - der.

F G maj7 *Pre Chorus* Bm F#m Bm A sus Bm

God in - car - nate rules as king, when He ap - pears in the East. in maj - es - ty and wrath

F#m G A **G** D *Chorus* G D/A A

53

His King - dom has come! Al - migh - ty God is the Lamb, man's on - ly Re - deem - er

D G A F#m G A sus A

58

The on - ly way man is saved is through Him Al - migh - ty God is The Truth, The Way, The Life!

D G A Bm

64

He is The King of Glor - y for - ev - er, A - men! When the

H Em *Bridge* A G

earth be - comes God's King - dom, we shall take up our pla - ces as cre - a - ted be - ings and

Almighty God, The King of Glory

73 F#m G A/G G/A A B

wor - ship the God Who was, Who is and is to come!

I E *Chorus* A E/B B E

Al - migh - ty God is the Lamb, man's on - ly Re - deem - er The on - ly way man is saved

82 A B G#m A B sus B

is through Him Al - migh - ty God is The Truth, The Way, The Life!

87 E A B **J** E *Tag Out*

He is The King of Glo - ry for - ev - er A - men! Al - migh - ty God is the Lamb.

91 E

He is the King of Glo - ry Al - migh - ty God is the Lamb He is the King of Glo - ry